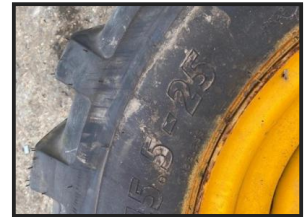


# STEPHEN GILL

## PLANT SALES & EXPORT

### JCB 15.5-25 Wheel & Tyres



**£POA**

JCB 15.5-25 Wheel & Tyres

Product Details	
Category/Type	Rubber/Steel tracks and Wheels & Tyres
Make	JCB
Model	15.5-25 Wheel & Tyres
Year	-
Hours	-

1 - 9 York Street, Luton, Bedfordshire LU2 0EZ

Tel: +44 1582 451364

[www.stephengillplantsales.co.uk](http://www.stephengillplantsales.co.uk) [sales@stephengillplantsales.com](mailto:sales@stephengillplantsales.com)